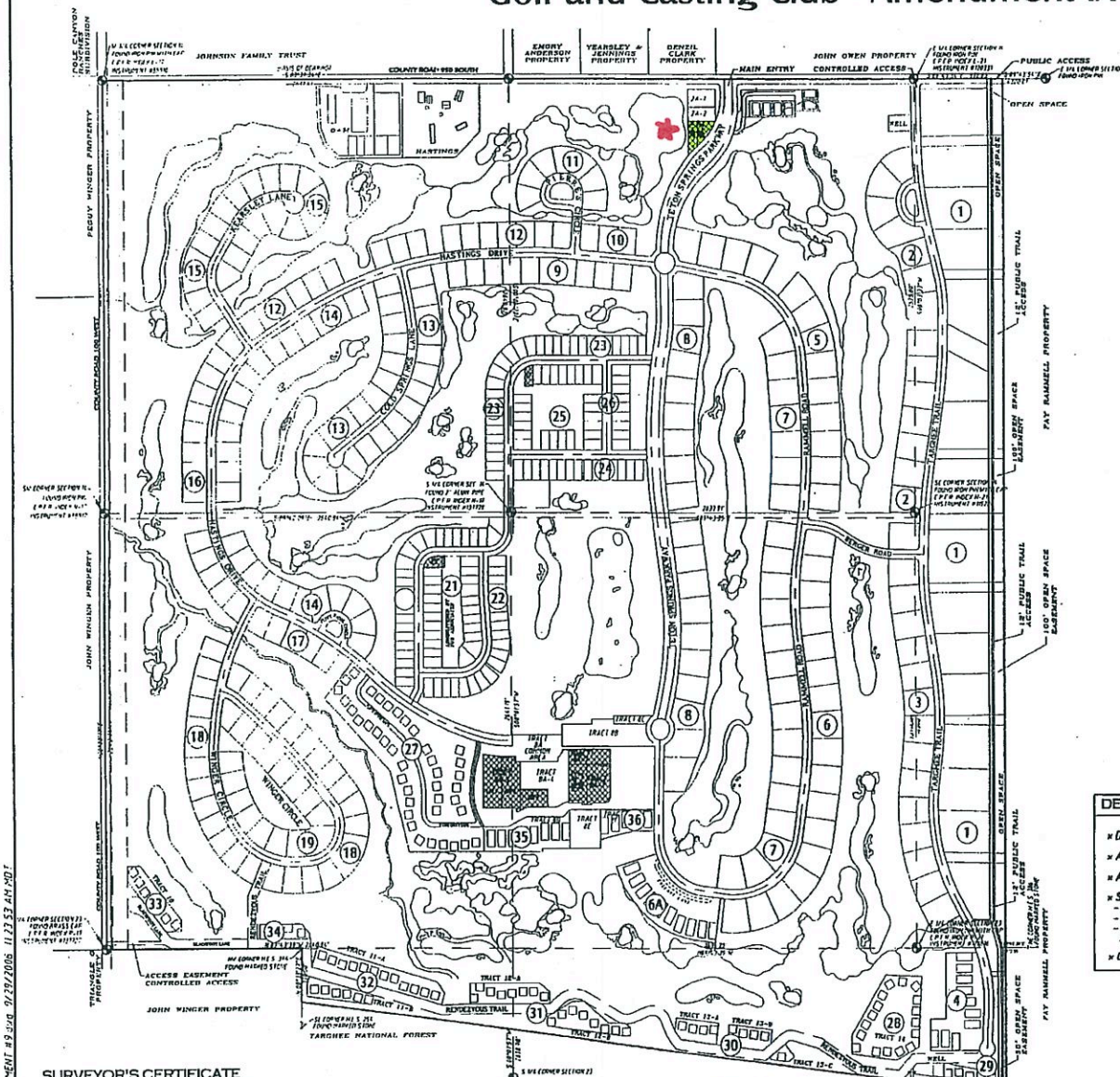


TETON SPRINGS

Golf and Casting Club - Amendment IX



MASTER PLAN DESIGNED BY:

AW ENGINEERING VICTOR, IDAHO
 BIOTA JACKSON, WYOMING
 CARL THRIESEN, ASLA BILLINGS, MONTANA
 LAND DESIGN STUDIO LOVELAND, COLORADO
 MICHAEL E. POTTER, ASLA PC DEVELOPMENT BOZEMAN, MONTANA

GOLF COURSE DESIGNED BY:

STEVE JONES / GARY STEPHANSON
 BYRON NELSON

AREA	BLOCK(S)	ACRES	UNITS(R)	UNITS(C)	DENSITY
COUNTY ROADS	-	7.05	-	-	-
SUBDIVISION ROADS	-	50.81	-	-	-
RANCH ESTATE LOTS	1	33.59	18	-	0.49
GOLF HOME LOTS	2-3, 5-8	74.02	99	-	1.35
MOUNTAIN MEADOWS NORTH	9-19	78.18	172	-	2.26
MOUNTAIN MEADOWS WEST	23-28	12.10	76	-	8.16
WARM CREEK CABINS (TR. 9)	20-22	11.16	88	-	8.24
FOREST CABINS (TR. 28-34)	27	12.51	40	-	3.12
VILLAGE CABINS (TR. 35-38)	28-34	14.81	75	-	5.03
ENCLAVE CABINS (TR. 5)	35-38	3.50	13	-	3.71
TARGHEE TRAIL CABINS	6A	4.28	10	-	4.28
CLUB CONDOMINIUMS (TR. 6E)	4	4.81	10	-	2.17
	-	1.08	2	-	3.77
TR. 8B (GOLF SHOP/CART AREA)	-	1.75	-	-	-
TRACT BA (MIXED USE) 1,2,3	-	1.07	-	80	6.59
TRACT BC (HELIPAD)	-	0.28	-	-	-
TRACT BA-5 (MIXED USE) 1,2,3	-	2.22	-	84	-
HASTINGS RANCH (TR. 15)	-	5.00	5	-	1.00
OPER. & MAINT. (TR. 1)	-	4.58	-	-	4.80
TRACT 2 (ENTRY LOT 2A-1, 2A-2)	-	0.82	4	-	-
TRACT 2 (ENTRY LOT 2B1, 2B2)	-	0.50	-	-	-
TRACT 3 (EQUEST. & ACT.)	-	3.97	-	-	-
TRACT 7 (GOLF ACADEMY)	-	1.44	-	-	-
TRACT 18 (WELL LOT 1)	-	0.34	-	-	-
TRACT 4 (WELL LOT 2)	-	0.14	-	-	-
OPEN AREAS (A-D)	-	3.09	-	-	(ADMINISTERED BY HOMEOWNERS)
OPEN SPACE (1-7)	-	418.33	-	-	(ADMINISTERED BY GOLF COURSE)
OPEN SPACE (E-H)	-	0.33	-	-	(ADMINISTERED BY GOLF COURSE)
OPEN SPACE AMENDED VI	-	0.51	-	-	(ADMINISTERED BY GOLF COURSE)
TOTAL OPEN SPACE	-	431.28	-	-	(55.70% OF TOTAL LAND IN PROJECT)
TOTAL PROJECT	-	774.17	658	80	0.79

Instrument # 181903
 DIIGGS, TETON, IDAHO
 2005-10-30 10:25:37 No. of Pages: 4
 Recorded for: A W ENGINEERING
 NOLAN G. BOYLE
 E-Office Recorder Display
 181,903

DEVELOPMENT NOTES

- x DEVELOPMENT IS ZONED R-1
- x A CENTRAL SEWER SYSTEM
- x A CENTRAL WATER SYSTEM
- x SETBACKS: EXCEPT AS NOTED - COUNTY STANDARD R-1 ZONE - MOUNTAIN MEADOWS - NATURAL STREAMS TO ALL STRUCTURES EXCEPT AS NOTED
- x OPEN SPACE HAS NOT BEEN ALTERED



SURVEYOR'S CERTIFICATE

ARNOLD W. WOOLSTENHULME, BEING A REGISTERED LAND SURVEYOR / ENGINEER IN THE STATE OF IDAHO, No. 2860, DO HEREBY CERTIFY THAT I DID CAUSE THE SURVEY OF THE TRACT OF LAND AS HEREIN PLATTED AND DESCRIBED.

MASTER PLAN / BLOCK MAP
 SCALE 1" = 500'

SHEET NO.	DESCRIPTION
1	TITLE PAGE / INDEX / NOTES
2	MOUNTAIN MEADOWS WEST & NORTH
3	TRACT 2 & TRACT BA
4	VILINITY MAP / CERTIFICATES / NOTES

AMENDED PLAT # IX
 TO INSTRUMENT #: 170402, 170401, 171721
TETON SPRINGS
 GOLF AND CASTING CLUB - AMENDMENT IX
 THE S 1/2 SECTION 14, THE N 1/2 SECTION 23, A PART OF SECTION 13, A PART OF SECTION 24, AND A PART OF H.E.S. 386, ALL IN TOWNSHIP 3 NORTH, RANGE 45 EAST, B.M., TETON COUNTY, IDAHO
 10-3-06
 TETON SPRINGS GOLF AND CASTING CLUB, L.L.C.
 TITLE PAGE / INDEX / NOTES JULY 2006 SHEET 1 of 4